

Installing Passport USB Drivers

Ensure that the Passport is not connected to the computer via the USB cable.

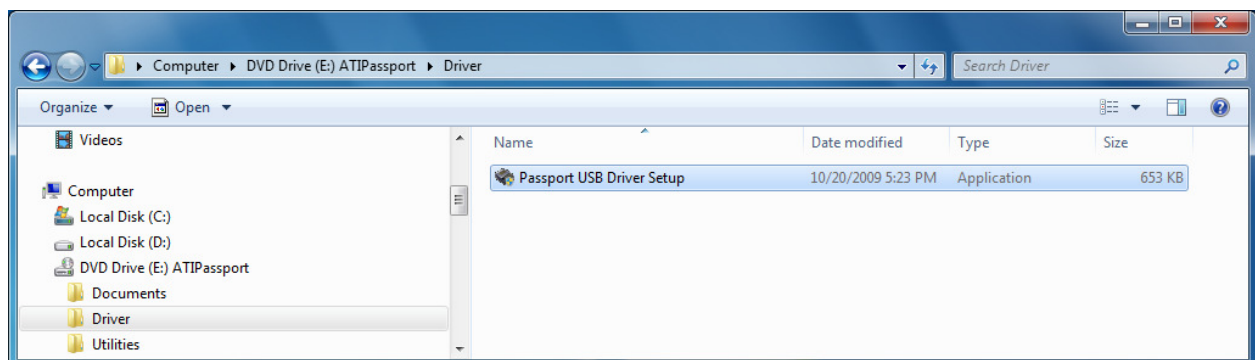
Place Passport driver CD in computer.

If the computer has autoplay enabled, the Passport USB Driver Setup dialog will appear.



If the Passport USB Driver Setup dialog does not appear, navigate to the Driver folder on the Passport driver CD.

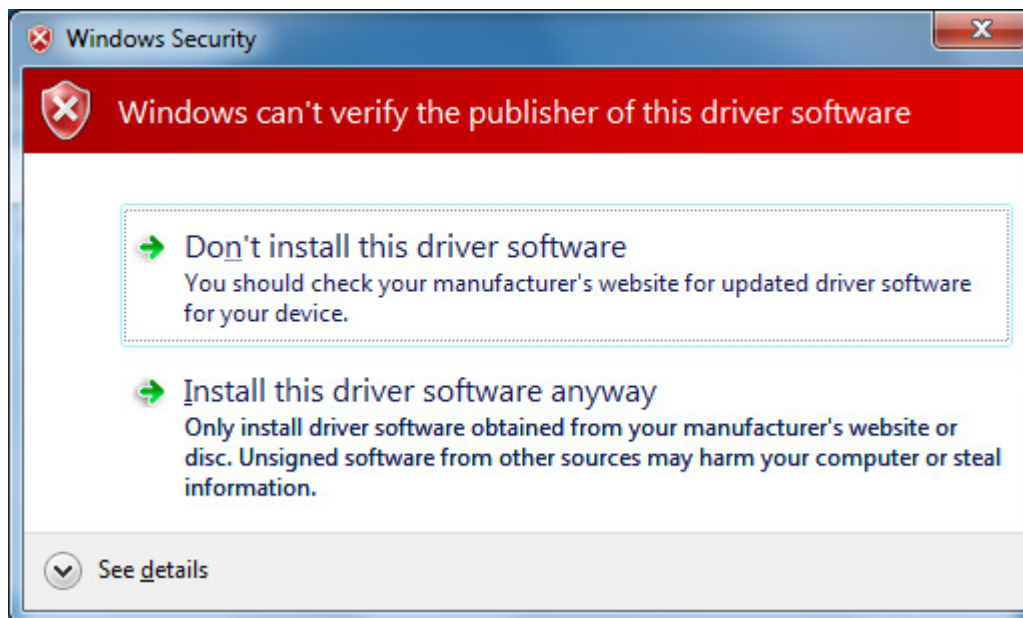
Open the file Passport USB Driver Setup.exe.



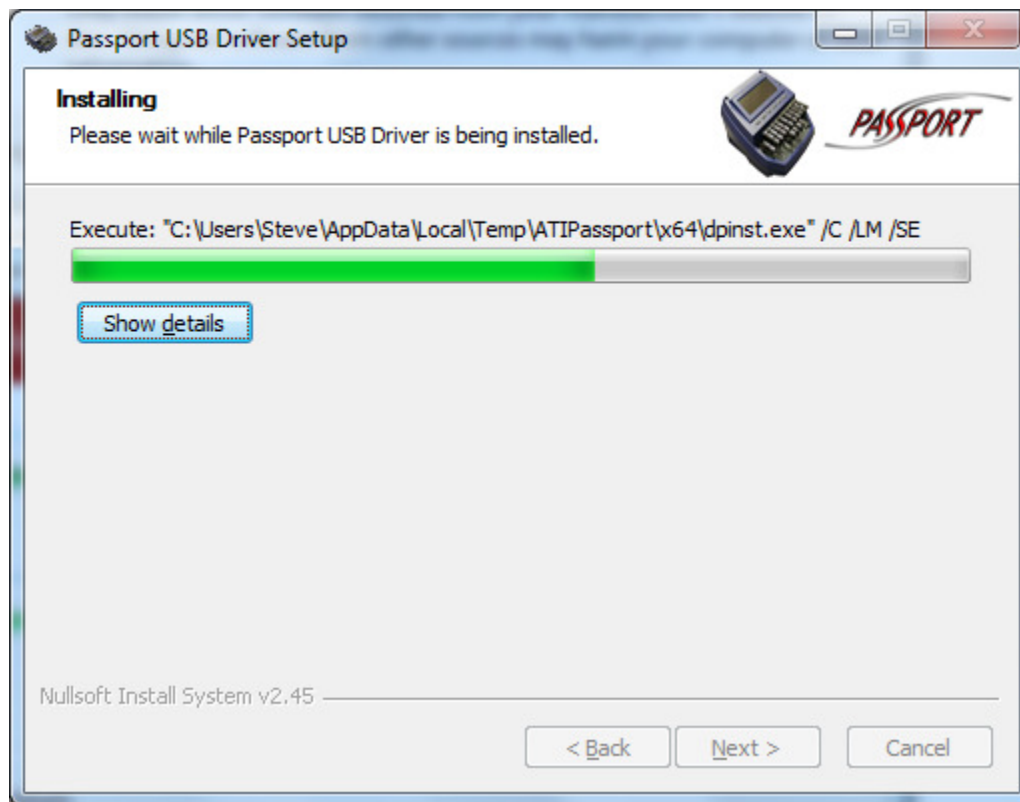
At the Passport USB Driver Setup dialog select Install.



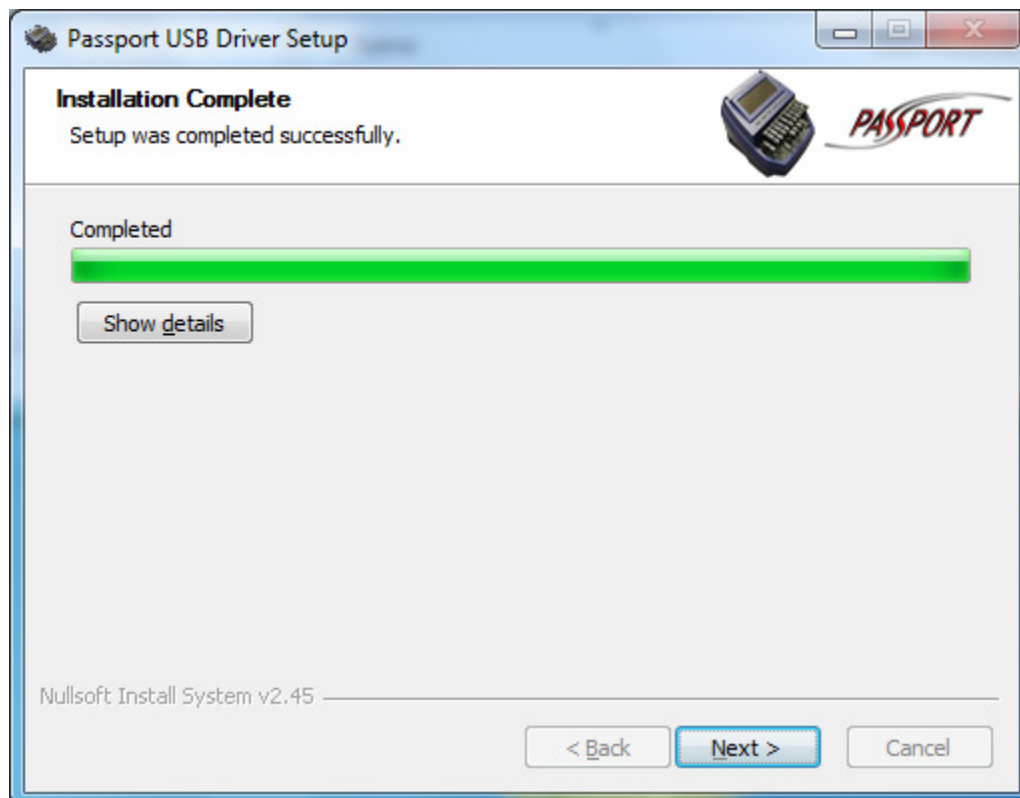
If you receive the Windows Security dialog choose "Install this driver software anyway."



The installation of the driver begins ...



Once the installation is complete choose Next.



When the Passport USB Driver Setup dialog appears, please read the instructions concerning the final steps in the installation process.

Select Finish.



Connect the USB cable from your Passport to a USB port on your computer and turn the Passport on. This should start the Windows Add New Hardware Wizard.

Select "Install the software automatically (Recommended)."

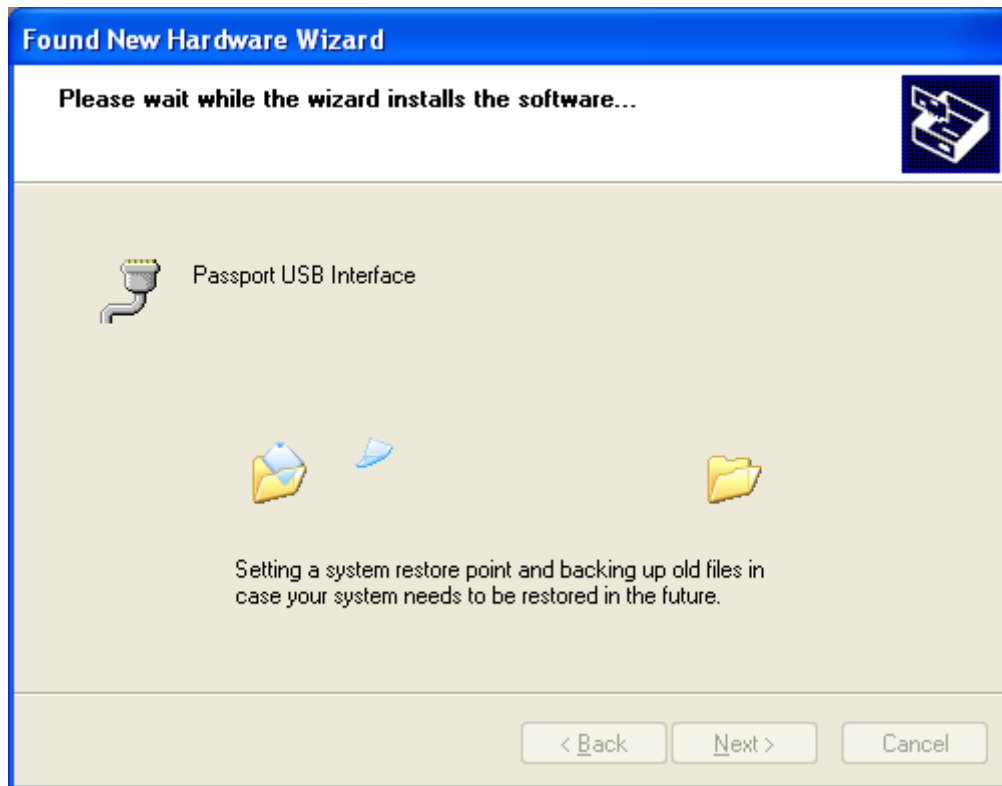
Choose Next.



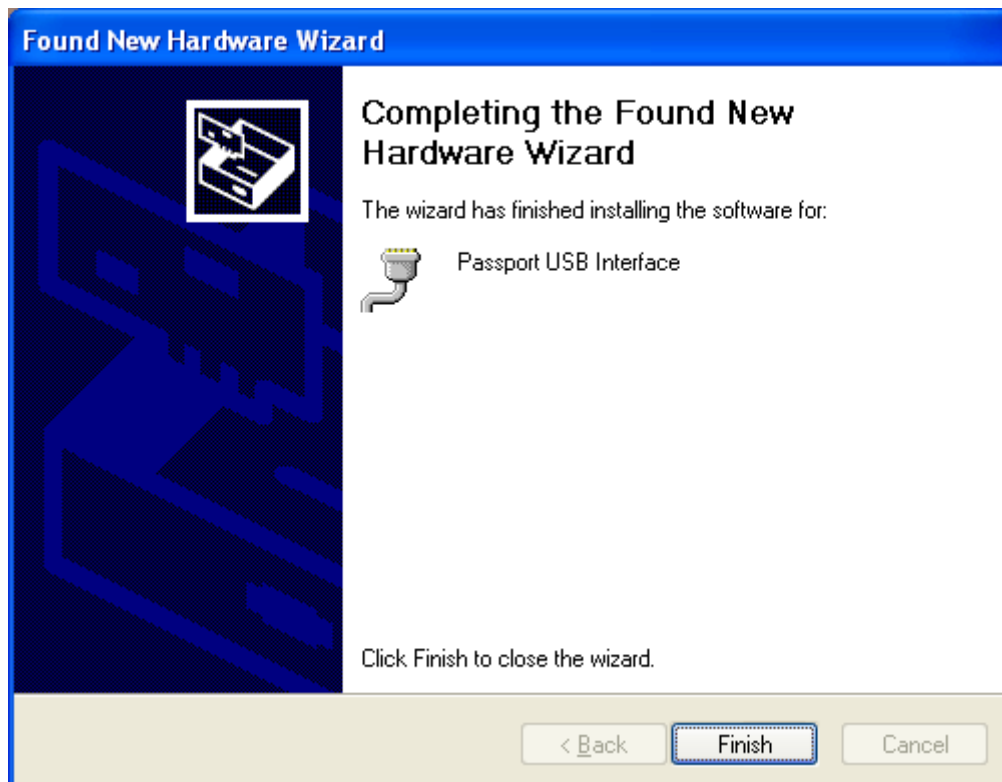
If you receive the Windows Security dialog choose Continue Anyway.



The installation of the device begins ...



Once complete choose Finish.



Once installed you may confirm the installation by checking the Device Manager.

