

Boost Box Setup Guide

Thank you for your purchase of an Advantage Boost Box™!

What's included

- (1) Boost Box™ by Advantage Software, Inc.
- (1) Power adapter
- (1) RJ45 Crossover cable (labeled)

Before beginning please note that your Boost Box was shipped with an RJ45 Crossover cable. This looks like a standard ethernet cable, but it has a special wiring configuration and cannot be used for regular internet connectivity purposes. For this reason, the Crossover cable has been clearly marked for your convenience.

If you misplace your Crossover cable, another can be purchased from Advantage.

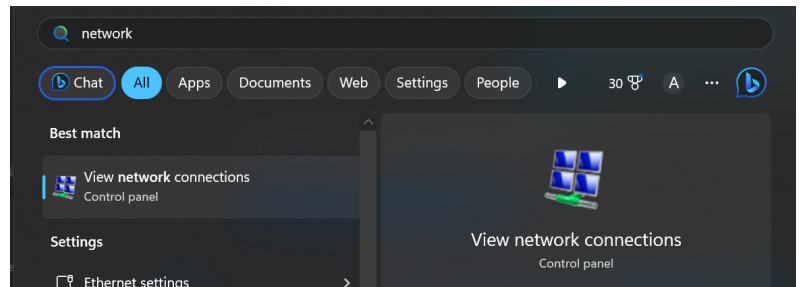
- Step 1: Insert the power cable into your Boost Box into the power input port labeled DC
- Step 2: Plug the included crossover cable into the LAN port
- Step 3: Plug the Crossover cable into your Eclipse PC
- Step 4: Power the Boost Box on using the red power button



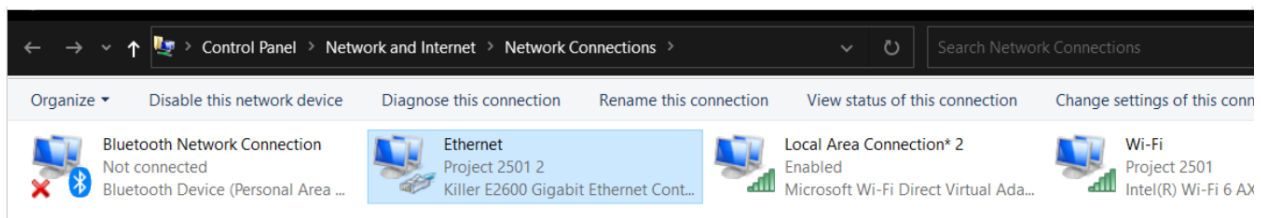
Windows Network Settings

To access Boost Box settings in Windows

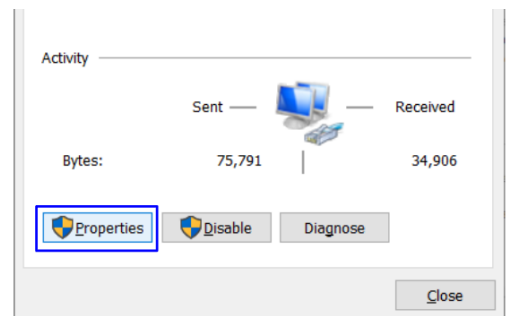
- Click start and type “network”
- Click “View network connections”



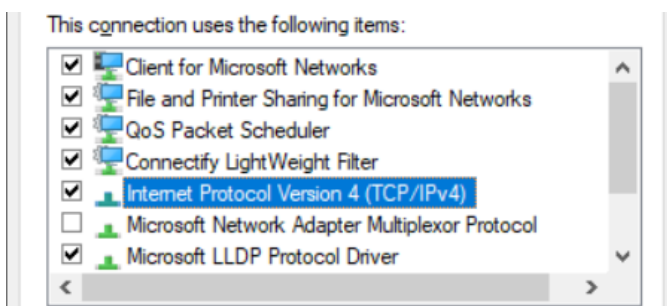
- Identify the Boost Box LAN connection to your PC, most computers only have one LAN/Ethernet port.



- Double-click on the LAN/Ethernet network and then choose Properties



- Double-click on Internet Protocol Version 4 (TCP/IPv4)



Set Boost Box IP addresses

- Step 1: Choose Use the following IP address

☐ Obtain an IP address automatically

☒ Use the following IP address:

IP address:	. . .
Subnet mask:	. . .
Default gateway:	. . .

- Step 2: Set the IP address field to 192.168.0.2
(note that you do not need to type the . in manually. Use the right arrow to move from 0 to the space for 2)

☒ Use the following IP address:

IP address:	192 . 168 . 0 . 2
Subnet mask:	. . .
Default gateway:	. . .

- Step 3: Press Tab to autofill the Subnet mask

☒ Use the following IP address:

IP address:	192 . 168 . 0 . 2
Subnet mask:	255 . 255 . 255 . 0
Default gateway:	. . .

- Step 4: Set the Default gateway to 192.168.0.1

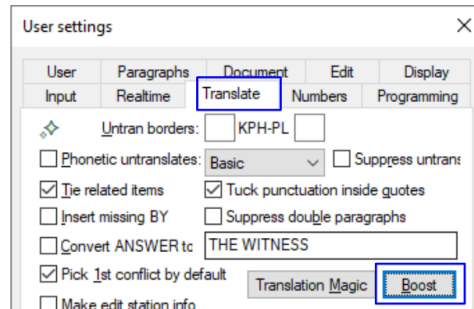
☒ Use the following IP address:

IP address:	192 . 168 . 0 . 2
Subnet mask:	255 . 255 . 255 . 0
Default gateway:	192 . 168 . 0 . 1

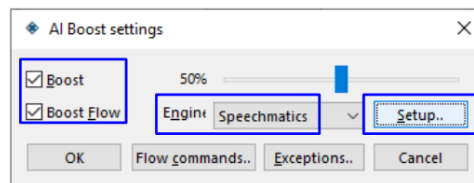
- Press OK to save these changes.

Eclipse Settings

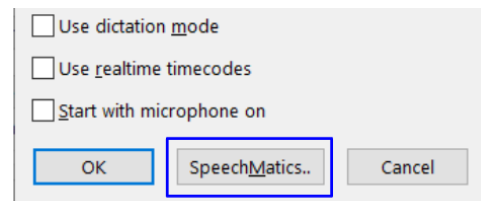
- Open Eclipse
- Navigate to User Settings (Alt+U)→Translate tab
- Click on Boost



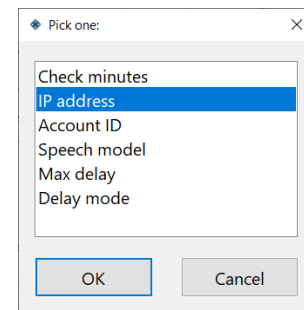
- Check Boost
- Check Boost Flow if desired
- Set Engine to Speechmatics
- Click on Setup...



- In the Speech options setup window, choose SpeechMatics



- Next, choose IP address and press OK



- Set the IP address to ws://192.168.0.1 and press OK

